

SPECIFICATIONS

Rated Current:3.0AMP
 Contact Resistance:30mΩ Max
 Withstand Voltage:1000V AC/DC
 Insulation Resistance:1000MΩ Min
 Operation Temperature:-40°C to +105°C

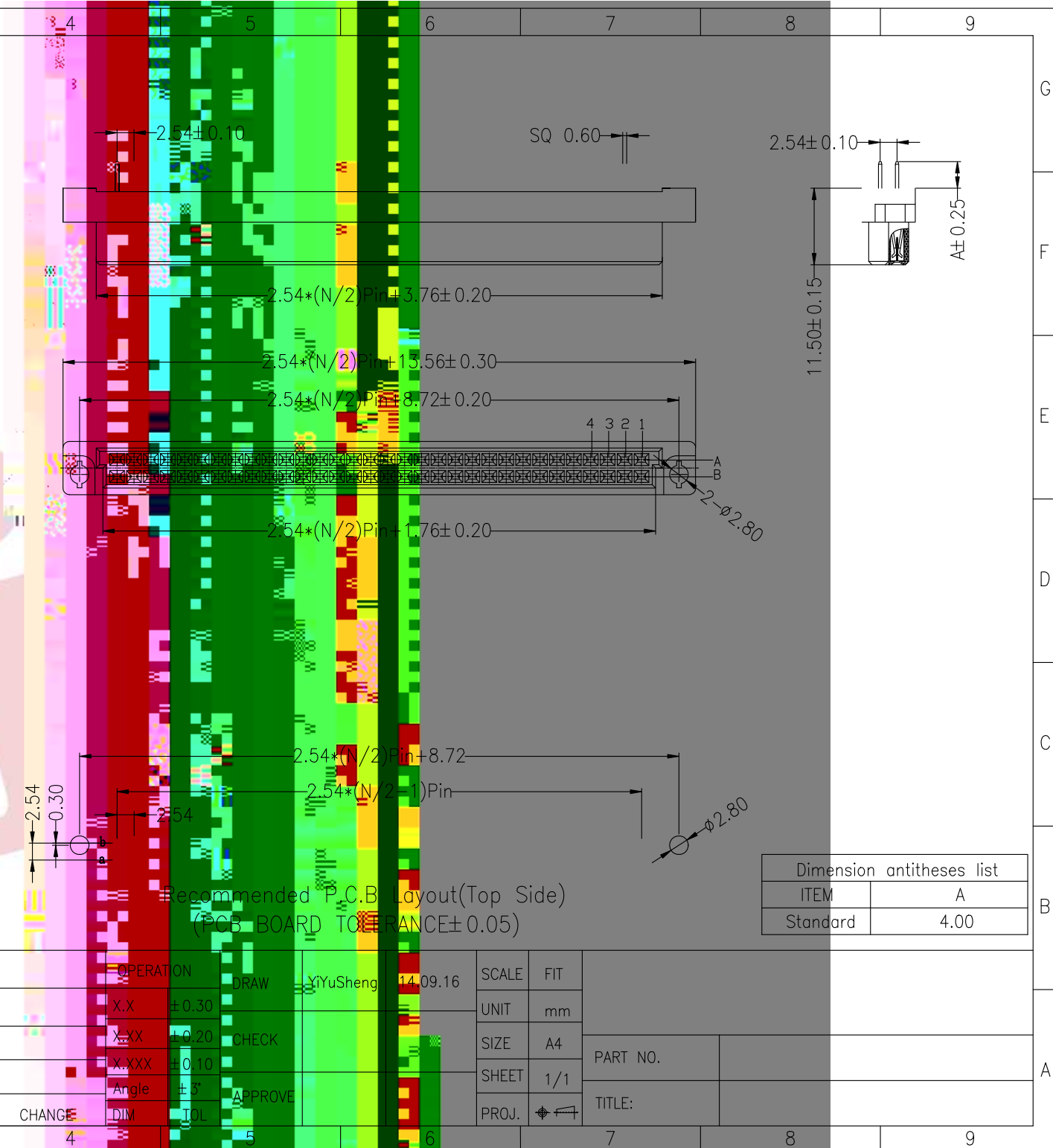
Contact Material:Brass
 Contact Plating:Au or Sn Over Ni
 Insulator Material:Polyester(UL94V-0)
 Resistance To Soldering Heat:
 245°C±5°C, 10s(PBT insulator)

Ordering Information

35112 XX B F S XX BWAX

No. of Pins Contact Type C
 NPin F=Female
 N=10、16、20、
 32、44、48、64

A0	2012.04.10	NEW DRAWING	
REV	DATE	MODIFICATION DESCRIPTION	CHANGE



Recommended P.C.B Layout(Top Side)
 (PCB BOARD TOLERANCE±0.05)

Dimension antitheses list	
ITEM	A
Standard	4.00

				OPERATION	DRAW	YiYuSheng	14.09.16	SCALE	FIT		
				X.X	±0.30			UNIT	mm		
				X.XX	±0.20	CHECK		SIZE	A4	PART NO.	
				X.XXX	±0.10			SHEET	1/1	TITLE:	
				Angle	±3°	APPROVE		PROJ.			
				DIM	TOL						